

Red Light Therapy Systems By Tanning Supply Shop LLC

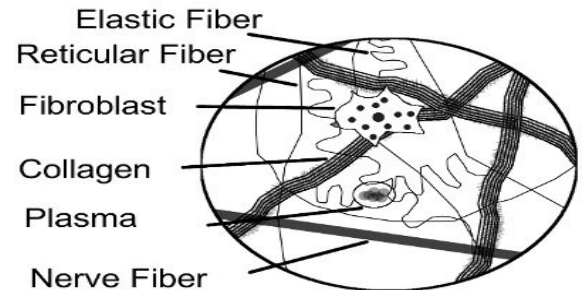
Covers: TSS Collagen Plus 620nm & 660nm Lamps / TSS LED Devices (415nm, 640nm, 660nm, 860nm)

What is Red Light Therapy & How Does it Work ?

Red light therapy has been around for over 50 years, it is a low power monochromatic light therapy that uses photon energy in the Red band of light (620nm to 700nm) to synthesize adenosine triphosphate (ATP). ATP is used to transfer energy to cells which in turn powers metabolic processes, DNA synthesis, RNA synthesis, protein synthesis, enzyme synthesis, and fibroblast by 140% to 200% . Fibroblast is a cell ubiquitous in connective tissue that makes collagen as well as elastic fibers. Collagen is the principal protein of the skin, tendons, cartilage, bone, and connective tissues. Collagen is the main protein that gives tissue its firmness. Elastic Fiber also referred to as Elastin Fiber by many publications, is a fiber in connective tissue rich in elastic proteins and is what give tissue its elasticity / flexibility.

Red Light Therapy Key Benefits:

- Dramatically Firms Skin & Increases Elasticity / Tone. (Wrinkles, Fine Lines, Saggy Skin)
- Repairs Damaged Skin. (Stretch Marks, Scars, Sun Spots)
- Evens Out Pigmentation.
- Excellent Treatment for Acne Management.
- Increases Circulation,
- Increases Skins Moisture Retention.
- Skin Conditions. (Psoriasis, Rosacea)
- Inflammatory Conditions (Arthritis, fibromyalgia, Bursitis, Tendinitis)
- Sprains & Muscle Injuries
- Aches & Pains
- Tissue Repair / Wound Healing / bone healing
- Reduces Effects of Macular Degeneration
- Reduces bruising and inflammation if it's fresh injury
- Reduces Results of Sunburns when used within 12 hours
- Increases Metabolism
- Increases Energy by



How Long Does It Take

Research shows the optimal dosage of light therapy to be 4 joules, All our devices are session timed to 5 Joules due to distance from light, difference in light penetration depth in different individuals etc... Our 28-36 Lamp Full Body Lay down Units Require a Maximum Session Time of 15-20 . Our LED devices have 3-6 minute session time depending on model used. Using the devices longer than there recommended session time will not improve results. There is no known dangers to overexposure of red light therapy.

How Often Do I Have To Use It?

It depends on what you are using it for. If you are using it for cosmetic benefits 3 to 4 times per week for first 6 to 8 weeks should be plenty then 2 times a week thereafter for maintenance sessions. For skin conditions (especially acne) start out daily until you get the results you want then keep reducing a 2 days per week till you're at the minimum amount of treatments that keeps your condition under control. Pain Relief as often as needed to control Pain up to 2 times per day. Once again there is no known dangers to overexposure of red light therapy.

How Soon Will I Notice Results ?

For Cosmetic use 84% of clients see noticeable results within 12 sessions.

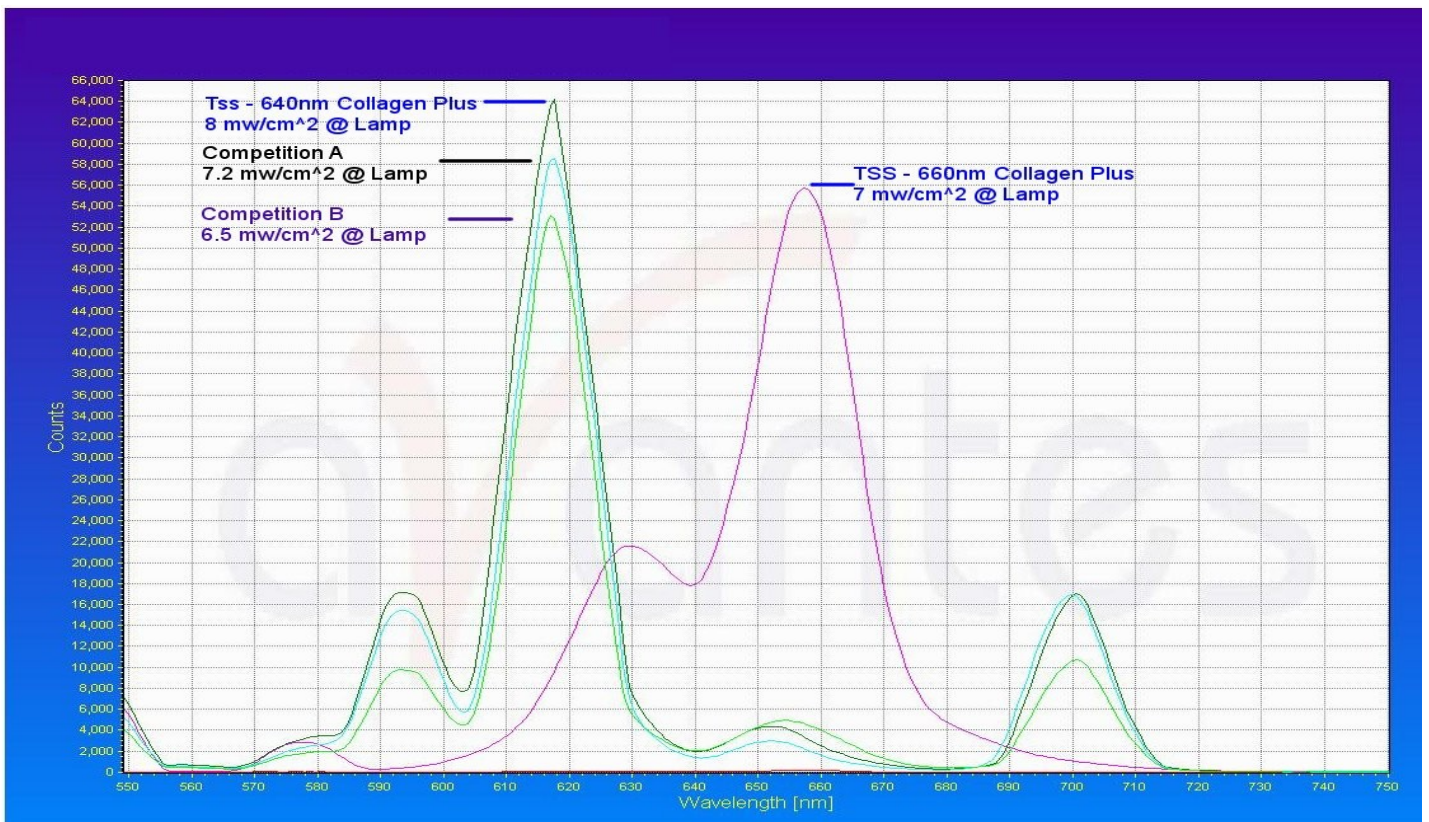
For pain Relief a study of 784 cases showed 87.12 % of the cases reported excellent pain relief of these cases 39% of them experience results within 1-3 sessions, 27% of them within 4-7 sessions, and 24% of them within 7-12 sessions.

So many Devices on the market what makes yours different ?

We are continually developing our products to make them better, we spend 100's of hours researching to make sure our units are exactly what they need to be based on scientific research. Our fluorescent tubes are of the highest output on the market and we are the only company to date to offer 660nm in a fluorescent tube. Many companies will advertise a 633nm unit and when we test them they will actually be 615nm this happens very often. We have a spectrometer on site and every set of fluorescent tubes in checked before they leave to make sure they are within 5nm of 620nm or 660nm. Our LED panels as well are calibrated before they are shipped to within 5nm of specifications. You will receive a sheet with your unit showing the actual spectral output of your unit. We do all this to insure you get the best results from every unit you purchase from us. Our LED units are some of the highest power on the market on average 2x-3x more output than competing units while at an average of half the price, this give faster treatment times and deeper penetration for greater results.

Why are your Fluorescent Tubes 660nm and every other brand is 620nm ?

670nm is where the greatest amount of research has been done by scientists around the world and where the most benefits are found for deep penetration tissue regeneration. Unit recently no one had the capability to make a 670nm fluorescent lamp unit now. Our Lamp is not 670nm due to limitations on available phosphor as well as decrease of output at higher wavelengths 660nm is shown to have the same results within a few percentile of 670nm and penetrates deeper by up to 30% for the same output power, therefore we chose to use 660nm. We still offer a high output 620nm lamp and this is tailored more to cosmetic benefits.



Why are your Red Light LED panels 640nm & 660nm ?

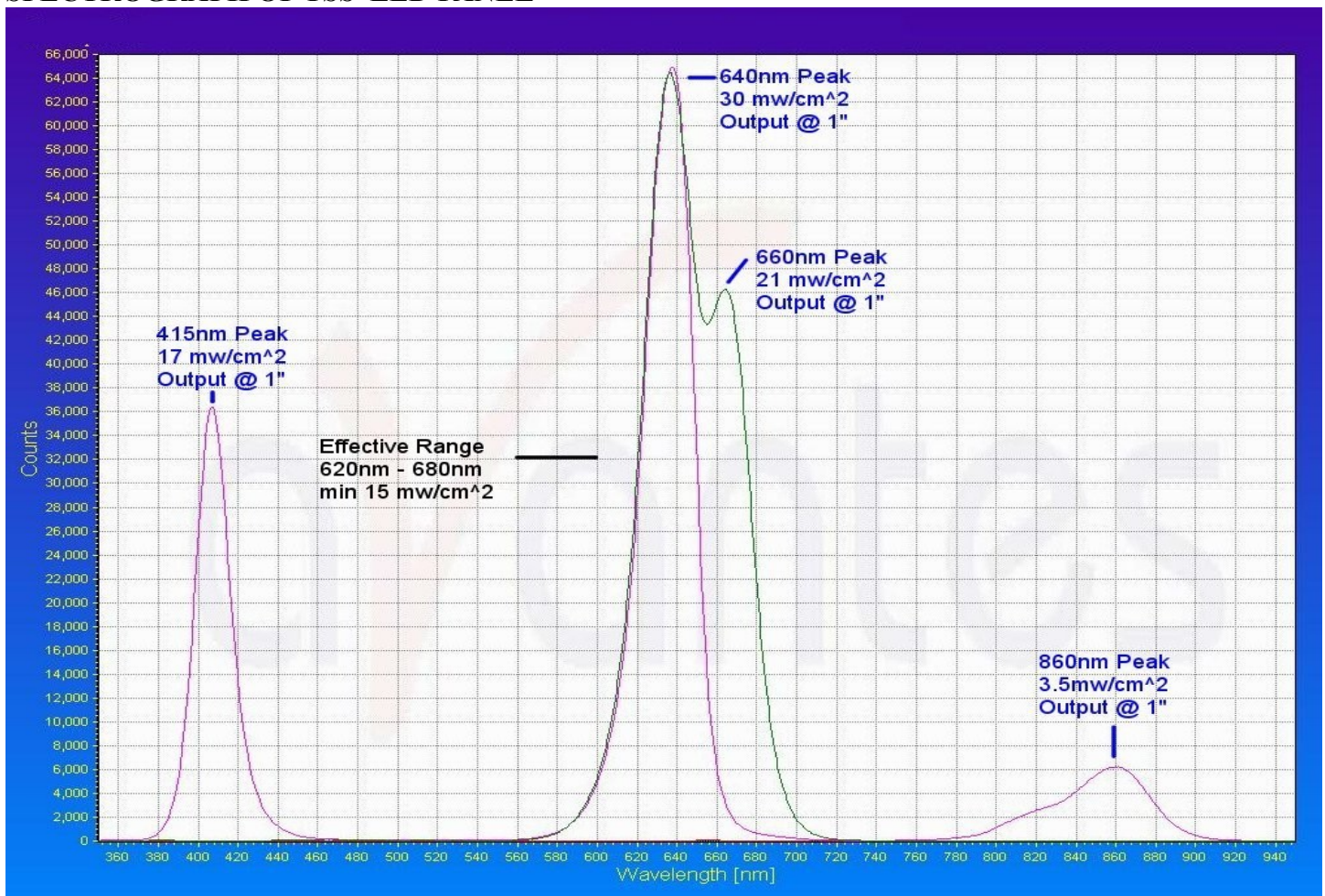
This is a very complex question, each wavelength has its benefits. Our units Peak at 640nm and they have a effective wavelength range of 620nm to 650nm or with the 660nm option range is 620nm to 680nm at 15 mw/cm². We do this to get benefits from multiple wavelengths. Where as most units are design around one wavelength our unit is design around a span of wavelengths. We achieve this by having specially design LEDs and power supplies to achieve much higher outputs than competitor units, and also by mixing LED's of different wavelengths in the panels as well. There are many wavelengths people claim are best, again they all have there good points.

615nm-633nm is a wavelength talked about a lot and its main benefit is for skin care and rejuvenation, it has minimal tissue penetration (3mm to 4mm) and is easily blocked by blood, collagen, and melanin (the darker your skin less penetration) . 633nm is very well absorbed by cytochrome c oxidase (CCO) which produces more cellular energy.

640nm to 660is a wavelength no one hears much about even though its very close to 670nm range and thats where 95% of the research has been done on light therapy. One reason for this is cause its very difficult to get LEDs that put out enough energy at 660nm to get adequate results. 660nm penetrates tissue very deep, 3x - 4x better than 633nm and 30% deeper than 670nm . 660nm is just as well absorbed by cytochrome c oxidase (CCO) as 633nm.

670nm gets a much better biological response and is better suited for heeling damaged cells penetrating down about 6mm and does it on average 30% Faster than 660nm so you will get the same results from 660nm in 13 minutes you would get from 670 in 10 minutes on damaged tissue less than. For cell damage deeper than about 6 mm 660nm has the clear advantage cause it penetrates deeper and has more energy when it gets to the cells, at this depth of penetration (6mm +) its estimated that tissue repair is almost 2x faster for 660nm compared to 670nm.

SPECTROGRAPH OF TSS LED PANEL



What are the differences between you LED devices and your full body therapy unit ?

The full body units are excellent for whole body cosmetic benefits, they are also good for people that have inflammatory conditions or pain conditions in large areas of there body. They are also excellent for relaxing muscles and energizing the entire body.

Our LED devices are much higher output about 3x more than the whole body units and are designed for deep tissue repair in targeted areas. Our LED devices also have near infrared and blue light options.

Whats The benefit of Near Infrared (860nm) ?

Near Infrared penetrates deeper than Infrared light by about 2x – 3x more. Scientific evidence shows it boosts metabolism, reduces body fat, increases energy, improves circulation, reduces muscle fatigue, increases strength, reduces recovery times, and detoxification of the body,

What the benefit of blue light (415nm) ?

Blue light therapy at 415nm is proven at killing Acne bacteria. Eye protection must be worn when using the blue light it is very close to ultraviolet wavelengths of light.

Is it Safe ?

Yes, the FDA has cleared Low Level Laser Therapies (AKA- Red Light therapy). It has been studied for over 50 years and there are NO known side effects to Red Light Therapy. Even though there is no known dangers of side effects and it is used to treat conditions of the eye, we do not recommend using the devices without eye protection. If you have any medical conditions or are using it for eye treatment we strongly suggest you consult your doctor before use. If they have any questions or concerns please feel free to have them contact us.

How do I use it ?

Hold the unit on your skin or up to one inch away for best results , the unit has a built in timer you simply press the start button and it will start and automatically run till the end of the session. If you have 415nm option there is a on off switch on the panel for it so it does not need to be used all the time.

Model / ITEM #	Description	Price
TSS-29620	29 Lamp 620nm Full Body Unit (12 Minute)	\$3,695.00
TSS-29660	29 Lamp 660nm Full Body Unit (12 Minute)	\$4,495.00
TSS-PWR2	2 LED Panel Controller & Power Supply	\$550.00
TSS-PWR4	4 LED Panel Controller & Power Supply	\$850.00
TSS-PWR8	8 LED Panel Controller & Power Supply	\$1,050.00
TSS-L64	640nm 6x6 LED Panel (Higher Output / 3 Minute / 190 LEDs)	\$900.00
TSS-L66	660nm 6x6 LED Panel (Best Pain Relief / 3 Minute / 190 LEDs)	\$900.00
TSS-L6466	640nm & 660nm 6x6 LED Panel (3 Minute / 361 LEDs)	\$1,200.00
TSS+850	850nm Added to Panel Above (Total 361 LEDs)	\$400.00
TSS+415	415nm Added to Panel Above (Total 361 LEDs)	\$400.00
TSS-XL64	640nm 6x30 LED Panel (FOR SAUNA / 955 LEDs) Includes Power Supply (15 Minute Session Time @ 24" Distance)	\$1,900.00
TSS-P66	660nm 3x4 Portable Hand Held	\$500.00
CUSTOM	Custom Led Devices	PLEASE CALL

Custom mounts for tables, saunas, massage chairs, etc available please call !!!